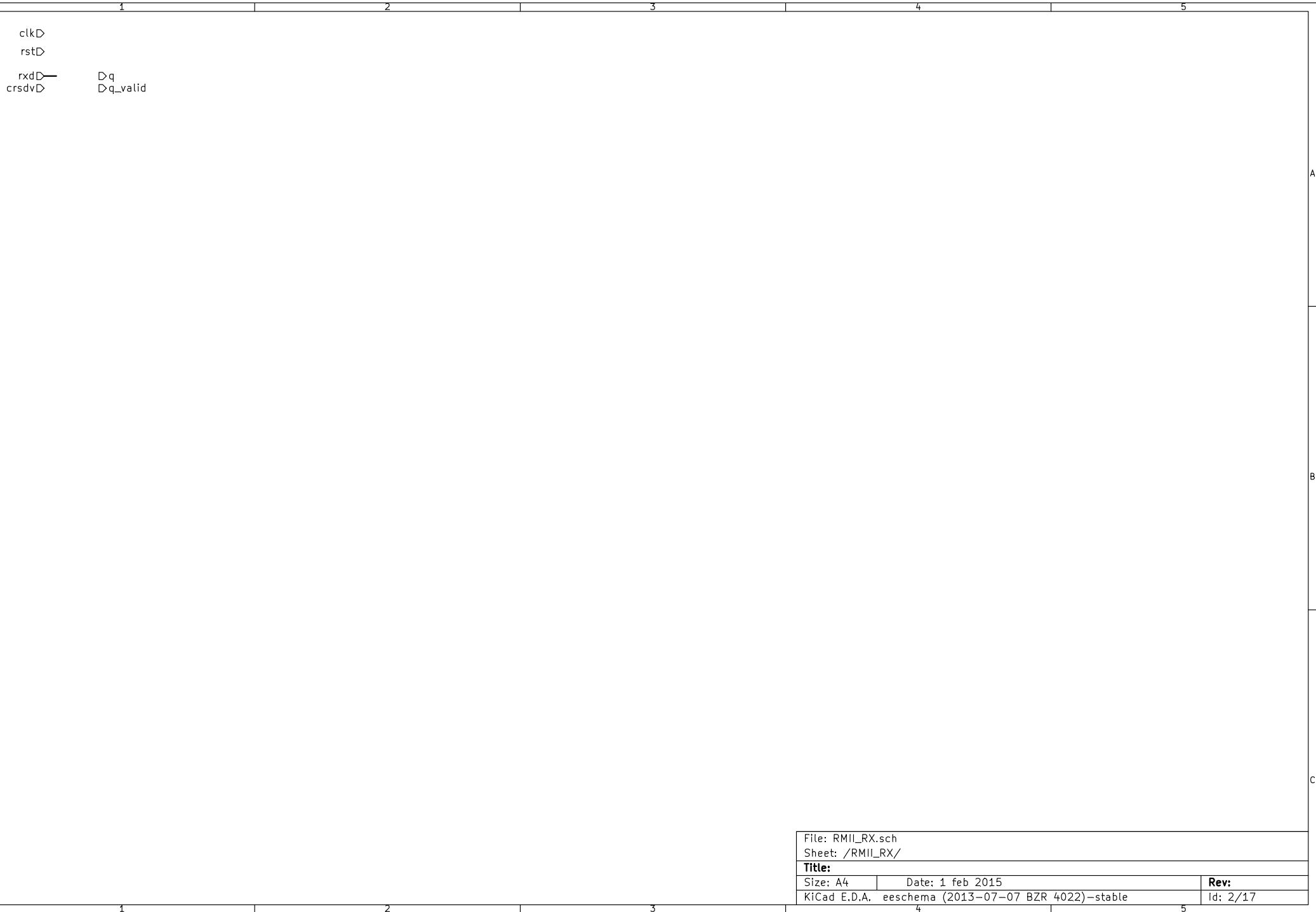
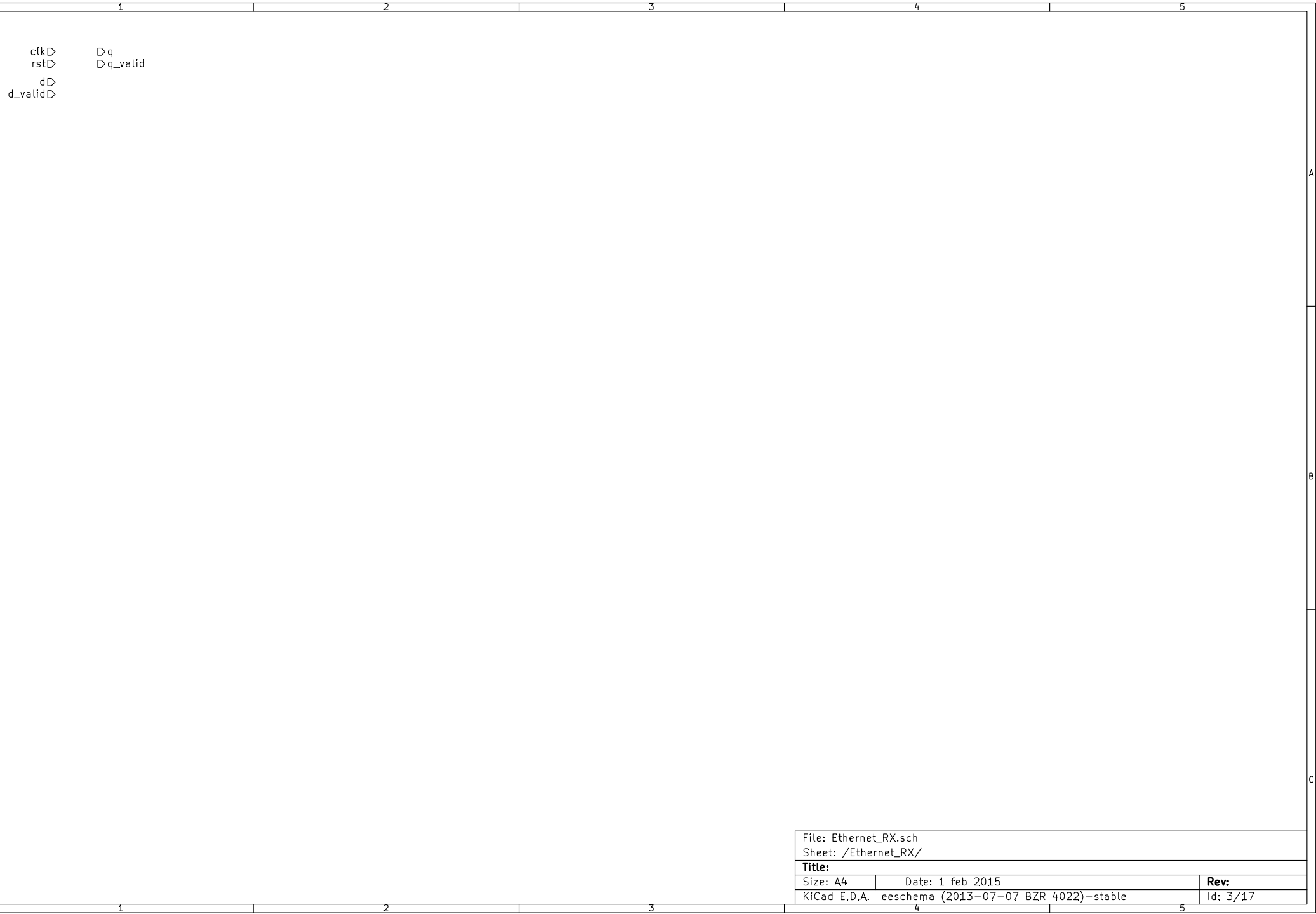


File: DVB-S-Top.sch		
Sheet: /		
Title:		
Size: A4	Date: 1 feb 2015	Rev:
KiCad E.D.A. eschema (2013-07-07 BZR 4022)-stable		Id: 1/17





clk▷
rst▷

d▷ ▷q

we▷ ▷a_full
re▷ ▷a_empty

A

B

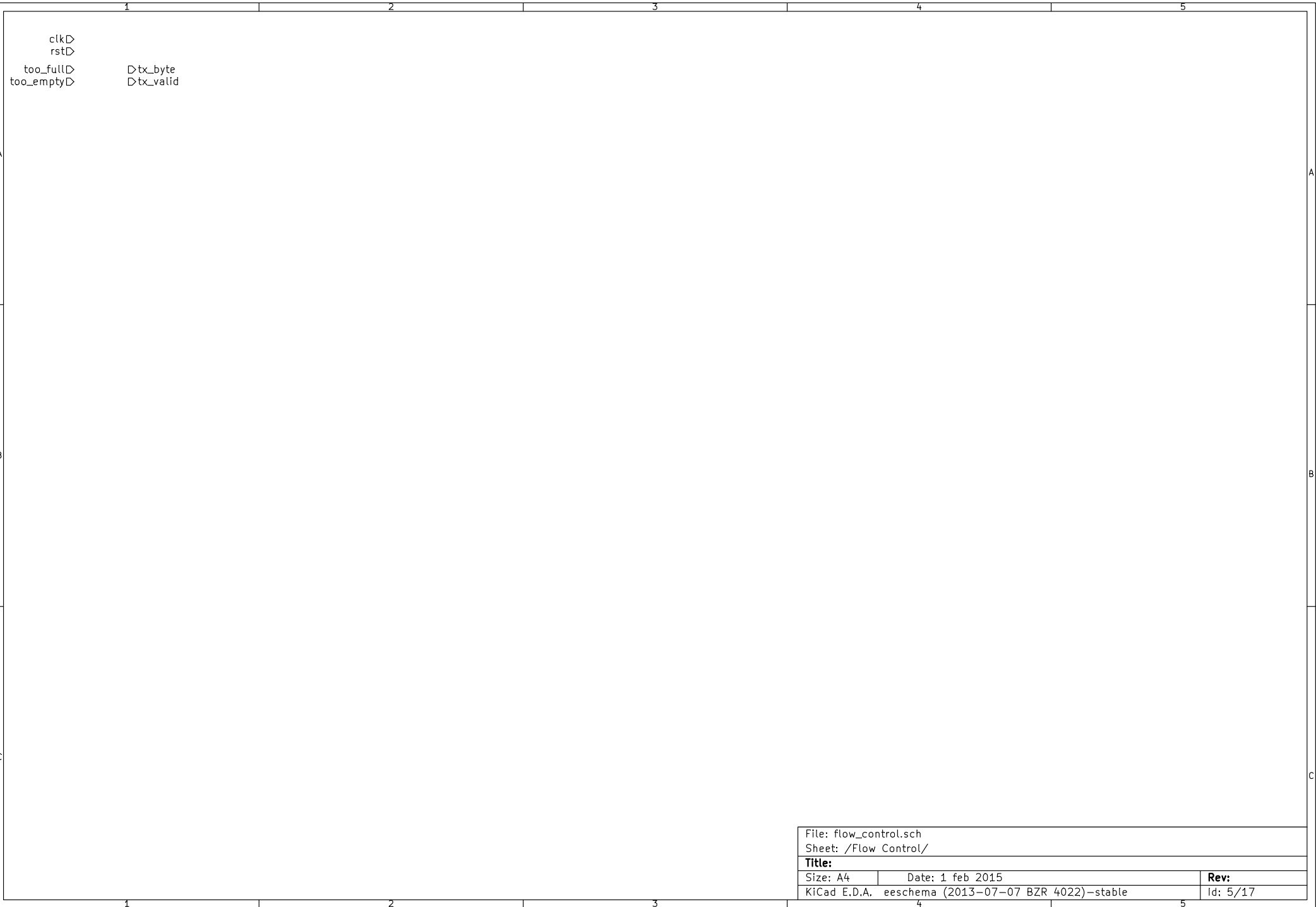
C

A

B

C

File: FIFO.sch		
Sheet: /FIFO/		
Title:		
Size: A4	Date: 1 feb 2015	Rev:
KiCad E.D.A.	eeschema (2013-07-07 BZR 4022)-stable	Id: 4/17



clk▷
rst▷
too_full▷ ▷tx_byte
too_empty▷ ▷tx_valid

File: flow_control.sch		
Sheet: /Flow Control/		
Title:		
Size: A4	Date: 1 feb 2015	Rev:
KiCad E.D.A.	eeschema (2013-07-07 BZR 4022)-stable	Id: 5/17

clkD
rstD
dD Drmii_txd
d_validD Drmii_txen

A

A

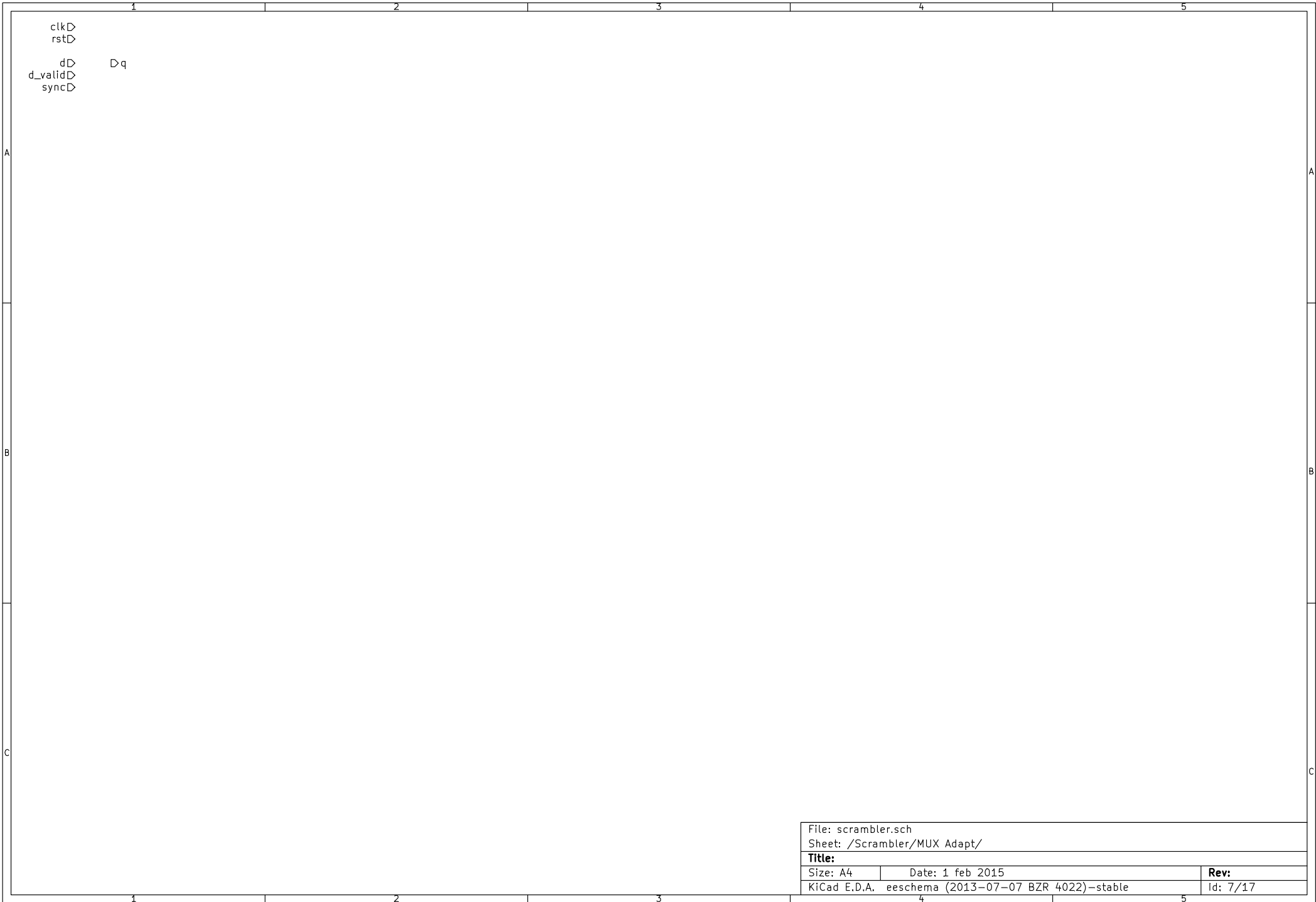
B

B

C

C

File: RMII_TX.sch		
Sheet: /RMII TX/		
Title:		
Size: A4	Date: 1 feb 2015	Rev:
KiCad E.D.A.	eeschema (2013-07-07 BZR 4022)-stable	Id: 6/17



File: scrambler.sch		
Sheet: /Scrambler/MUX Adapt/		
Title:		
Size: A4	Date: 1 feb 2015	Rev:
KiCad E.D.A.	eeschema (2013-07-07 BZR 4022)-stable	Id: 7/17

clk▷
rst▷
clk_en▷
sync▷
d▷ ▷q

A

A

B

B

C

C

File: interleaver.sch		
Sheet: /Interleaver/		
Title:		
Size: A4	Date: 1 feb 2015	Rev:
KiCad E.D.A.	eeschema (2013-07-07 BZR 4022)-stable	Id: 8/17

clk▷
rst▷
clk_en▷
d_valid▷
d▷ ▷q

A

A

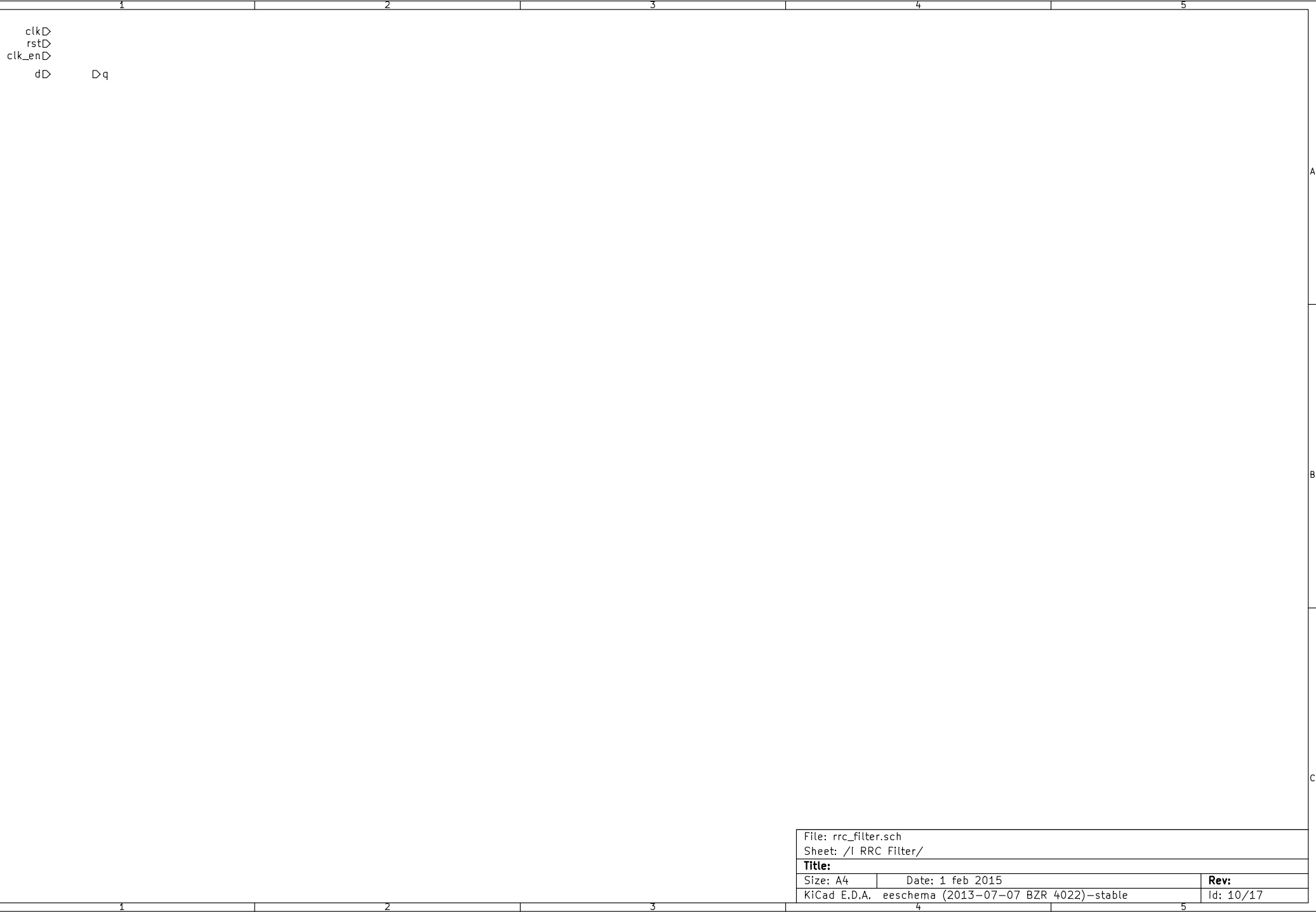
B

B

C

C

File: interpolator.sch		
Sheet: /1 Interpolator/		
Title:		
Size: A4	Date: 1 feb 2015	Rev:
KiCad E.D.A.	eeschema (2013-07-07 BZR 4022)-stable	Id: 9/17



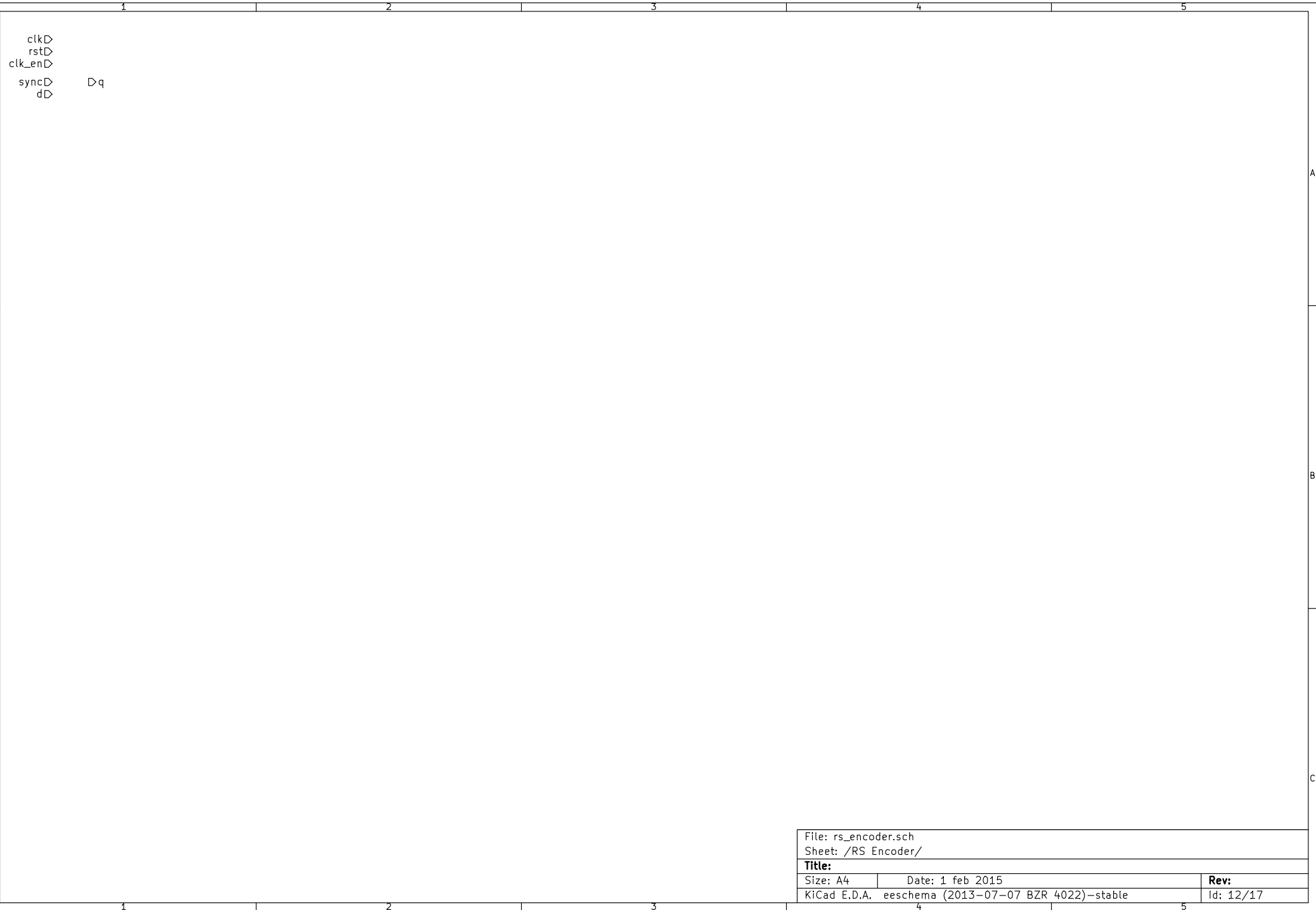
clk▷
rst▷
d▷

Dread

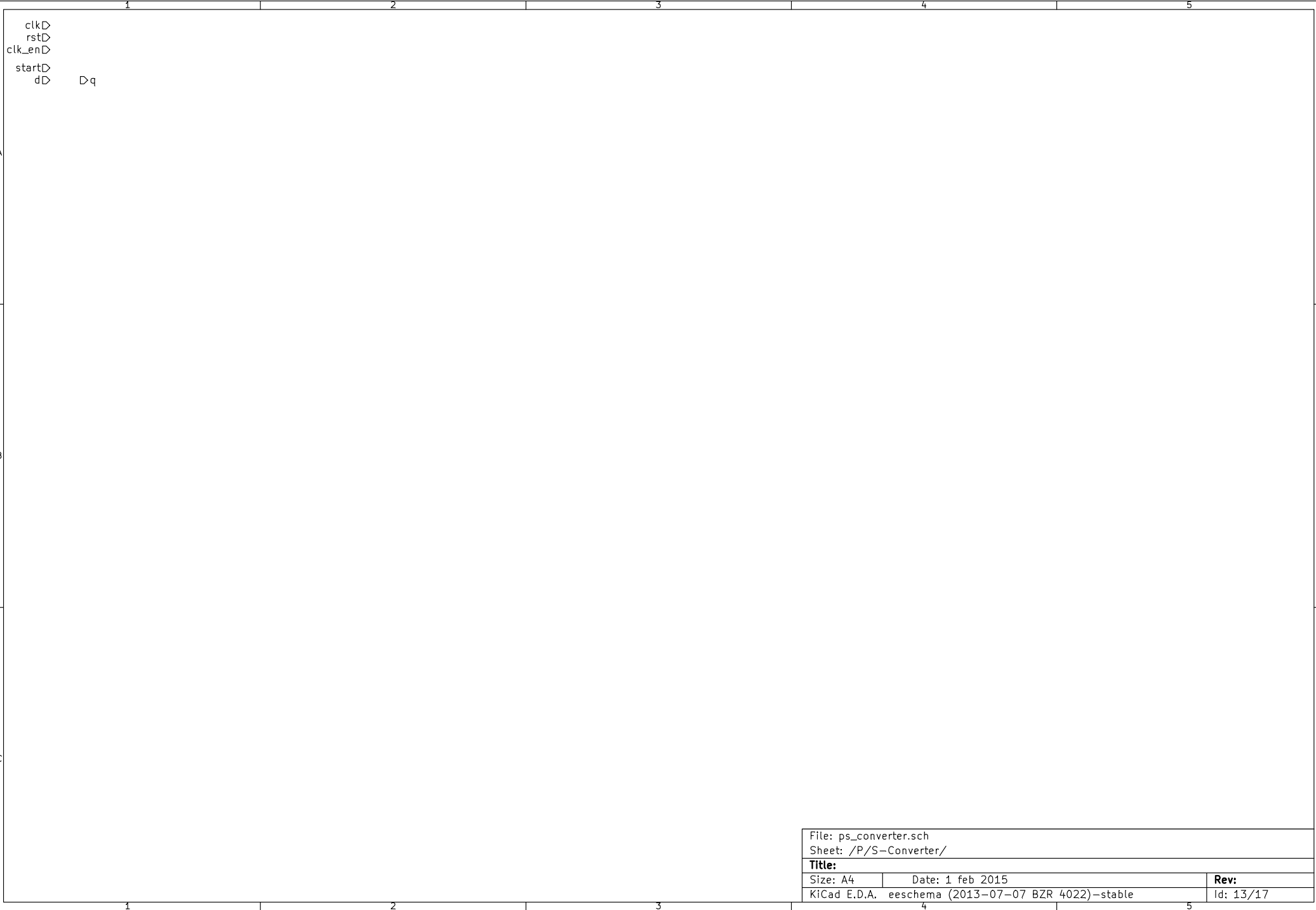
Dq Daten aus FIFO, 1 Takt Delay
Dscr_valid 188x Puls aller 8 bit, 6x Pause
Drs_clken Puls aller 8 bit
Dint_clken Puls aller 8 bit

Dframesync_scr Puls @ SOF
Dframesync_rs Puls @ SOF, 1 Takt Delay
Dframesync_int Puls @ SOF, 2 Takte Delay

File: controller.sch		
Sheet: /Controller/		
Title:		
Size: A4	Date: 1 feb 2015	Rev:
KiCad E.D.A.	eeschema (2013-07-07 BZR 4022)-stable	Id: 11/17



File: rs_encoder.sch		
Sheet: /RS Encoder/		
Title:		
Size: A4	Date: 1 feb 2015	Rev:
KiCad E.D.A.	eeschema (2013-07-07 BZR 4022)-stable	Id: 12/17



clk▷
rst▷
clk_en▷
d_valid▷
d▷ ▷q

A

A

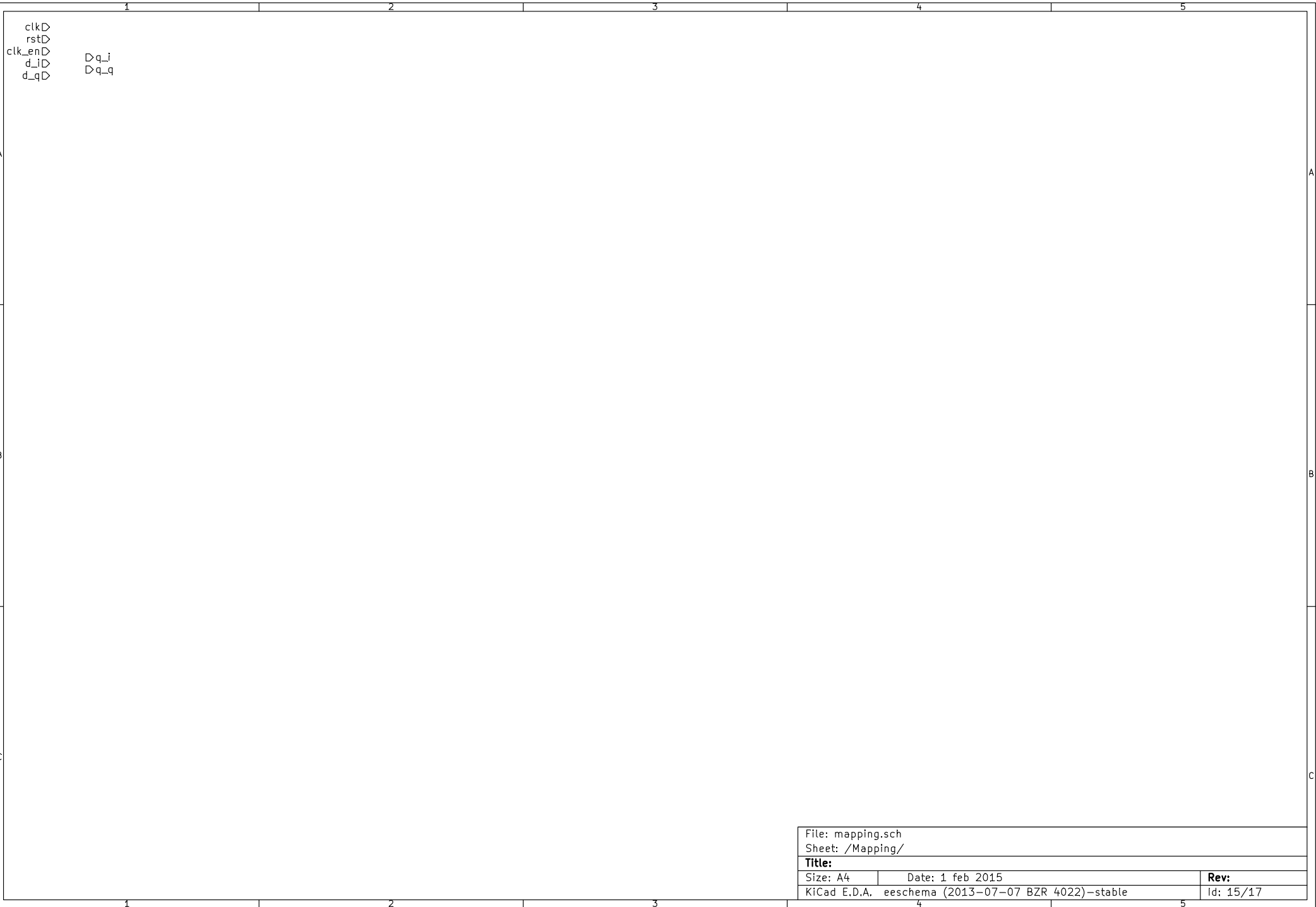
B

B

C

C

File: interpolator.sch		
Sheet: /Q interpolator/		
Title:		
Size: A4	Date: 1 feb 2015	Rev:
KiCad E.D.A.	eeschema (2013-07-07 BZR 4022)-stable	Id: 14/17



clk
rst
clk_en
d_i
d_q
q_i
q_q

File: mapping.sch		
Sheet: /Mapping/		
Title:		
Size: A4	Date: 1 feb 2015	Rev:
KiCad E.D.A.	eeschema (2013-07-07 BZR 4022)-stable	Id: 15/17

clk▷
rst▷
clk_en▷ x▷
d▷ y▷

A

A

B

B

C

C

File: conv_coder.sch		
Sheet: /Convolutional Coder/		
Title:		
Size: A4	Date: 1 feb 2015	Rev:
KiCad E.D.A.	eeschema (2013-07-07 BZR 4022)-stable	Id: 16/17



File: rrc_filter.sch		
Sheet: /Q RRC Filter/		
Title:		
Size: A4	Date: 1 feb 2015	Rev:
KiCad E.D.A.	eeschema (2013-07-07 BZR 4022)-stable	Id: 17/17